

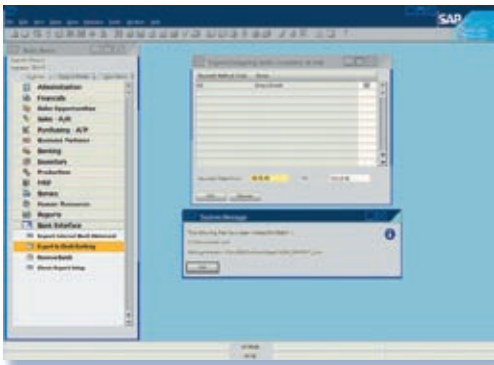


Enhance the SAP Business One product suite with fully integrated Bank Interface.

Utilizing the existing SAP Business One Payment Wizard and manual Bank Reconciliation functions, Bank Interface exports your supplier payment runs in multiple formats for upload to your existing desk banking system and imports your external bank statements for reconciliation with the General Ledger.

Export your outgoing payments

Your outgoing payments created through the SAP Business One Payment Wizard can easily be exported for import by your desk banking software. Featuring a user definable template design for multiple export formats and linked directly to your SAP Business One payments, export files are created that can be uploaded to your desk banking software application.



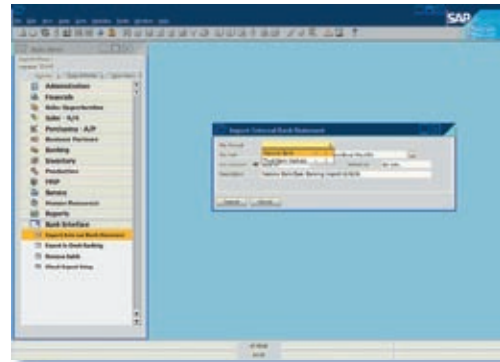
Exporting Payments to Desk Banking

Direct Debits

Incoming payments created through the SAP Business One Payment Wizard can be exported for use by your desk banking software creating a quick method of processing direct debits electronically with your bank.

Importing your Bank Statements

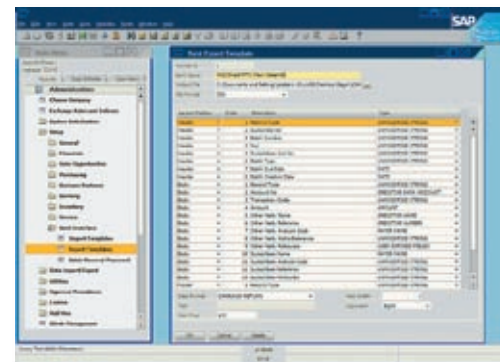
Featuring user defined bank import and export templates with default templates supplied to suit most banks, businesses can now quickly reconcile multiple bank accounts without having to manually enter their bank statements.



Import Bank Statements from Your Banking Software

Template Builder

Create and maintain multiple templates for different types of payments or different banks. The Bank Interface template builder allows you to design import and export templates to suit almost any bank.



Export Template Setup

Technical Requirements

- Available for SAP Business One 2005 and 2005 SP1 running on a Microsoft SQL Server database.
- Requires Microsoft.Net Framework 1.1.